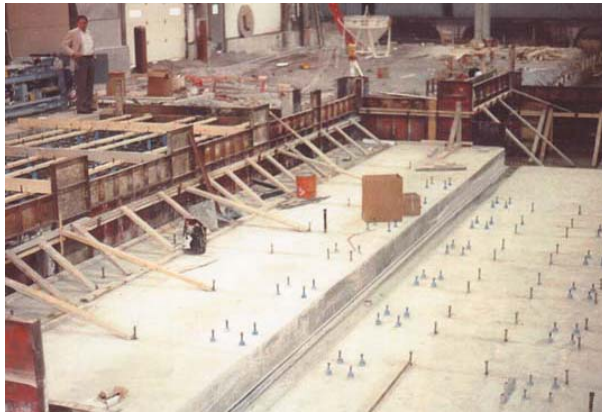


## PROJECT PROFILE:

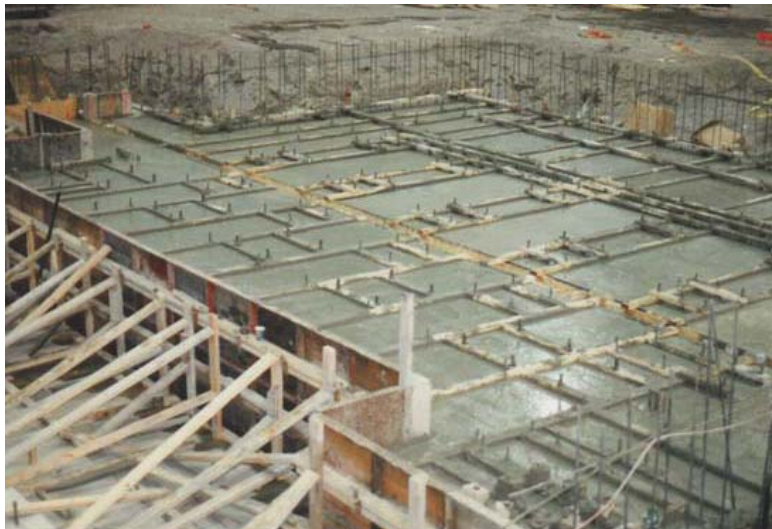
## MILL LINE

### STEEL PROCESSOR SEEKS RAFFIN'S ASSISTANCE FOR MILL

A major steel processor, located in the industrial area on Lake Calumet, expanded their operation with the addition of a mill for high speed production of smaller size round and square tube.



In order to fast track the completion of the project, the owner hired a construction manager who was familiar with this plant and its special needs, to coordinate contracts for the packages of work as they became available from the owner engineer. Raffin was selected to provide the foundations for the mill building and the foundation and slab for the mill warehouse building.



The equipment foundation work was let in two packages to shorten lead time and match Japanese design and American made equipment. Raffin was selected to provide the final equipment foundation package and setting of the remaining equipment. All dimensions for concrete foundations and equipment setting were in the metric system. Raffin chose to work with metric measuring devices. This saved time and avoided any errors from mis-conversion of the dimensions.