

## PROJECT PROFILE:

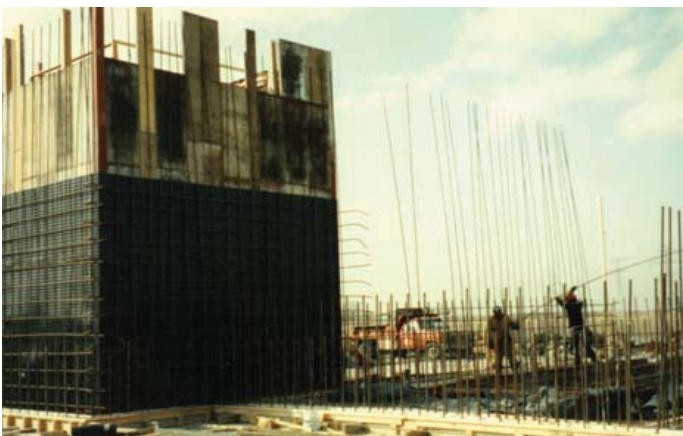
# WASTEWATER TREATMENT FACILITY

The fast growing food additives company contracted with Biothane, a company specializing in wastewater treatment design, to construct its new treatment plant. Biothane, as the general contractor, chose Raffin Construction for all of the concrete and architectural services for the new facility. The project was completed in 7 months.

### THE WASTEWATER BUILDING:



- 4 enclosed concrete tanks set on a 2' thick base with heavily reinforced walls 1' - 6" thick with heights in excess of 22 feet and enclosed with a concrete top.
- The project included installing special liners on some of the concrete tanks to protect the concrete from corrosion. The liners made of high-density polyethylene were placed on the forms and cast into the concrete.
- The total concrete placed on the project was in excess of 3,000 CY and included over 225 tons of reinforcing steel.



### THE OPERATIONS BUILDING:

The Operations Building, attached to the Wastewater Treatment Building, housed all of the equipment and offices which controlled the wastewater treatment plant. Raffin poured the foundations and completed all of the architectural work for this building.